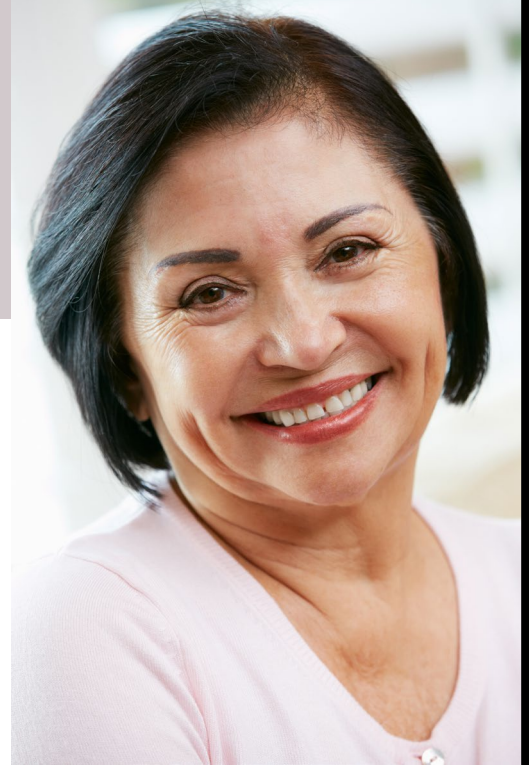


Do you have gum disease?



Researchers at the University of Kentucky invite you to participate in a study to learn if gum disease is different in someone without type 2 diabetes compared to someone with type 2 diabetes. This study requires 2-3 visits to the University of Kentucky. Participants will be compensated \$20-\$100 depending on number of study visits completed.

You may be eligible to participate if you:

- Are between ages 35-80;
- Are overweight; and
- Have been diagnosed with gum disease.

For more information, please contact:

Sabrina Braden
sabrina.braden@uky.edu
(859)-323-4923



An Equal Opportunity University